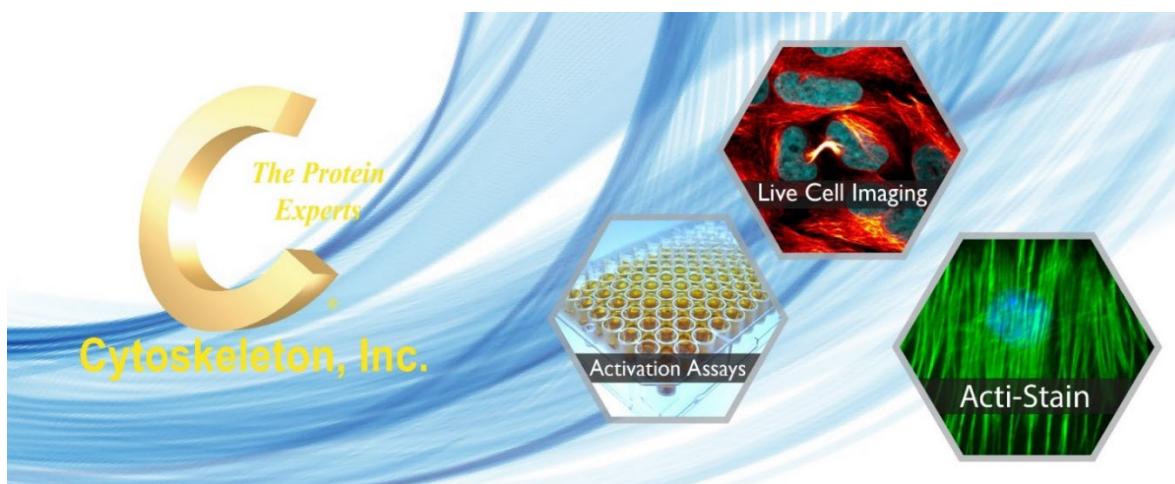


OFFERTA PROMOZIONALE

Cytoskeleton

Sconto del 25% Popular Research Tools

La Società Italiana Chimici, in qualità di Distributore della Cytoskeleton Inc. offre uno sconto del 25% su tutti i prodotti elencati di seguito:



L'offerta promozionale è relativa alle seguenti categorie di prodotti:

- Activation Assays
- Acetylation tools
- Ubiquitination tools
- Actin Tools
- Tubulin Tools

CONDIZIONI DI VENDITA:

Prezzi: al netto dell'IVA (22%)

Spese di Trasporto: € 10,00

Consegna: 7-8 giorni lavorativi dal ricevimento dell'ordine

Scadenza Offerta: fino al 21 Febbraio 2025

Codice Offerta: CYTO-2025

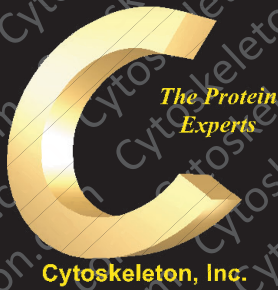
CONTATTARE:

Società Italiana Chimici

tel: +39 06 8818936 - 8800211

e-mail: offerte@sichim.com

Condizioni di Vendita consultabili alla pagina: [Condizioni Generali](#)



2025 Product Campaign # 1



Popular Cytoskeleton Research Tools

Get 25% off all eligible items

- **Activation Assays**
- **Acetylation tools**
- **Ubiquitination tools**
- **Actin Tools**
- **Tubulin Tools**



Campaign #1 2025 Cytoskeleton Inc. Items

CAT. NO.	PRODUCT	AMOUNT	Shipping Temp.	Storage on Arrival
AAC04-beads	Anti-Acetyl Lysine Mouse Monoclonal Antibody Agarose Conjugates	4 x 500 µl	AT	4°C
BK001	Actin Binding Protein Spin-Down Assay Kit	KIT 30-100 assays	AT	4°C
BK003	Actin Polymerization Biochem Kit	KIT 30-100 assays	AT	4°C
BK006P	Tubulin Polymerization Assay Kit (>99% pure porcine brain tubulin)	KIT 24 assays	AT	4°C
BK008	Ras Activation Assay Biochem Kit	KIT 50 assays	AT	4°C
BK008-S	Ras Activation Assay Biochem Kit	KIT 20 assays	AT	4°C
BK011P	Tubulin Polymerization Assay (fluoresc-96assays porcine brain tubulin)	KIT 96 assays	AT	4°C
BK030	Combo RhoA/Rac1/Cdc42 Activation Assay Kit	KIT 3 x 10 assays	AT	4°C
BK032-S	Arf1 Pulldown Activation Assay Kit	KIT 20 assays	AT	4°C
BK033-S	Arf6 Pulldown Activation Assay Kit	KIT 20 assays	AT	4°C
BK034	Cdc42 Pulldown Activation Assay Kit	KIT 50 assays	AT	4°C
BK034-S	Cdc42 Pulldown Activation Assay Kit	KIT 20 assays	AT	4°C
BK035	Rac1 Pulldown Activation Assay Kit	KIT 50 assays	AT	4°C
BK035-S	Rac1 Pulldown Activation Assay Kit	KIT 20 assays	AT	4°C
BK036	RhoA Pulldown Activation Assay Kit	KIT 80 assays	AT	4°C
BK036-S	RhoA Pulldown Activation Assay Kit	KIT 20 assays	AT	4°C
BK037	G-Actin : F-Actin In Vivo Assay Kit	KIT 30-100 assays	AT	4°C
BK038	Microtubule / Tubulin In Vivo Assay Kit	KIT 30-100 assays	AT	4°C
BK100	Rho GEF Exchange Assay	KIT 60-300 assays	AT	4°C
BK101	K-Ras GEF Exchange Assay	KIT 80-300 assays	AT	4°C
BK105	GAP Assay Kit	KIT 80-160 assays	AT	4°C
BK121	RhoA G-LISA Activation Assay (luminescence)	KIT 96 assays	AT	4°C
BK124	RhoA G-LISA Activation Assay (colorimetric)	KIT 96 assays	AT	4°C
BK124-S	RhoA G-LISA Activation Assay (colorimetric)	KIT 24 assays	AT	4°C
BK124-XL	RhoA G-LISA Activation Assay (colorimetric)	Large Quantities	AT	4°C
BK125	Rac1,2,3 G-LISA Activation Assay Kit (colorimetric)	KIT 96 assays	AT	4°C
BK126	Rac1 G-LISA Activation Assay Kit	KIT 96 assays	AT	4°C
BK127	Cdc42 G-LISA Activation Assay Kit (colorimetric)	KIT 96 assays	AT	4°C
BK127-S	Cdc42 G-LISA Activation Assay Kit (colorimetric)	KIT 24 assays	AT	4°C
BK128	Rac1 G-LISA Activation Assay Kit (colorimetric)	KIT 96 assays	AT	4°C
BK128-S	Rac1 G-LISA Activation Assay Kit (colorimetric)	KIT 24 assays	AT	4°C
BK129	RalA G-LISA Activation Assay Kit (colorimetric)	KIT 96 assays	AT	4°C
BK131	Ras G-LISA Activation Assay Kit (colorimetric)	KIT 96 assays	AT	4°C
BK131-XL	Ras G-LISA Activation Assay Kit	Large Quantities	AT	4°C
BK135	G-LISA Bundle (BK135 = BK124-S + BK127-S + BK128-S) (colorimetric)	3 KITS (24 assays/kit)	AT	4°C
BK150	RhoA ELISA Kit (colorimetric)	KIT 96 assays	AT	4°C
BK160	Signal-Seeker® Phosphotyrosine Detection Kit (30 assays)	KIT 30 assays	AT	4°C
BK160-S	Signal-Seeker® Phosphotyrosine Detection Kit (10 assays)	KIT 10 assays	AT	4°C
BK161	Signal-Seeker® Ubiquitin Detection Kit (30 assays)	KIT 30 assays	AT	4°C
BK161-S	Signal-Seeker® Ubiquitin Detection Kit (10 assays)	KIT 10 assays	AT	4°C

BK162	Signal-Seeker® SUMOylation Detection Kit (30 assays)	KIT 30 assays	AT	4°C
BK162-S	Signal-Seeker® SUMOylation Detection Kit (10 assays)	KIT 10 assays	AT	4°C
BK163	Signal-Seeker® Acetyl-Lysine Detection Kit (30 assays)	KIT 30 assays	AT	4°C
BK163-S	Signal-Seeker® Acetyl-Lysine Detection Kit (10 assays)	KIT 10 assays	AT	4°C
BK164	Signal-Seeker® Acetyl-Lysine Detection Kit - AAC03-Beads (30 assays)	KIT 30 assays	AT	4°C
BK165	Signal-Seeker® SUMOylation-1 Detection Kit (30 assays)	KIT 30 assays	AT	4°C
BK165-S	Signal-Seeker® SUMOylation-1 Detection Kit (10 assays)	KIT 10 assays	AT	4°C
BLR01	BlastR Rapid Lysate Prep Kit	50 purifications	AT	AT
BLR02	BlastR Rapid Filtration Kit	50 purifications	AT	AT
BLR03	BlastR Lysis/Dilution Kit	50 lysates	AT	AT
MT002-A	Microtubules (Taxol Stabilized and Lyophilized)	4 x 500 µg	AT	4°C
MT002-XL	Microtubules (Taxol Stabilized and Lyophilized)	1 x 10 mg	AT	4°C
PAK02-A	PAK Beads, Rac1/Cdc42 binding domain protein on beads	2 x 500 µg	AT	4°C
PAK02-B	PAK Beads, Rac1/Cdc42 binding domain protein on beads	6 x 500 µg	AT	4°C
PHDG1-A	Acti-stain™ 488 phalloidin	1 x 500 µl (300 slides)	AT	4°C
PHDH1-A	Acti-stain™ 555 phalloidin	1 x 500 µl (300 slides)	AT	4°C
PHDN1-A	Acti-stain™ 670 phalloidin	1 x 500 µl (300 slides)	AT	4°C
PHDR1	Rhodamine Phalloidin (14 µM in methanol)	1 x 500 µl	AT	4°C
RF02-A	Raf protein ras binding domain on GST beads	2 x 2 mg	AT	4°C
RF02-B	Raf protein ras binding domain on GST beads	6 x 2 mg	AT	4°C
T240-A	Tubulin (porcine brain, >99% pure)	1 x 1 mg	AT	4°C
T240-B	Tubulin (porcine brain, >99% pure)	5 x 1 mg	AT	4°C
T240-C	Tubulin (porcine brain, >99% pure)	20 x 1 mg	AT	4°C
T240-D	Tubulin (porcine brain, >99% pure)	10 x 1 mg	AT	4°C
T240-DX	Tubulin (porcine brain, >99% pure)	1 x 10 mg	AT	4°C
TL440M-A	Tubulin (AMCA dye labeled; porcine, micro-injectn)	5 x 20 µg	AT	4°C
TL440M-B	Tubulin (AMCA dye labeled; porcine, micro-injectn)	20 x 20 µg	AT	4°C
TL488M-A	Tubulin (HiLyte 488™ dye labeled; porcine, micro-injectn)	5 x 20 µg	AT	4°C
TL488M-B	Tubulin (HiLyte 488™ dye labeled; porcine, micro-injectn)	20 x 20 µg	AT	4°C
TL590M-A	Tubulin (Rhodamine labeled; porcine, micro-injectn)	5 x 20 µg	AT	4°C
TL590M-B	Tubulin (Rhodamine labeled; porcine, micro-injectn)	20 x 20 µg	AT	4°C
TL620M-A	Tubulin (X-rhodamine labeled; Bovine Brain micr-injectn)	5 x 20 µg	AT	4°C
TL620M-B	Tubulin (X-rhodamine labeled; Bovine Brain micr-injectn)	20 x 20 µg	AT	4°C
TL670M-A	Tubulin (HiLyte 647™ dye labeled; porcine, micro-injectn)	5 x 20 µg	AT	4°C
TL670M-B	Tubulin (HiLyte 647™ dye labeled; porcine, micro-injectn)	20 x 20 µg	AT	4°C

Distributed by: